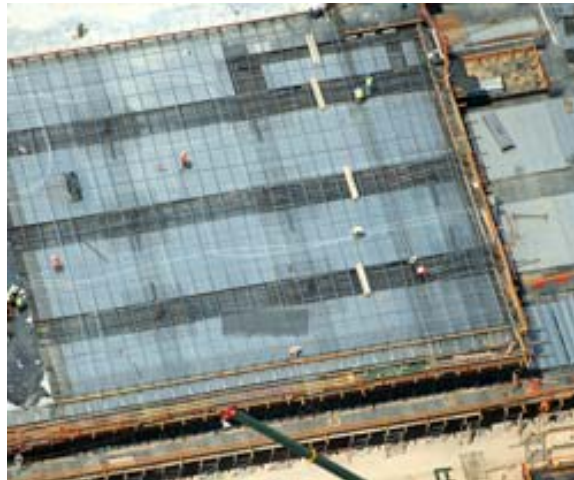




ROUSE HILL TOWN CENTRE—STAGE 1

Rouse Hill is located in Sydney's north-west, between Castle Hill and Schofields, within the Baulkham Hills Shire. The site for the 'Rouse Hill Regional Centre' (RHRC) consists of approximately 100ha of greenfield area between Windsor Road and Caddies Creek. The RHRC involves the development of a new planned community, including approximately 1,500 homes in varying densities, which revolve around a Town Centre. The development will be integrated with open space and environmentally rejuvenated creek corridor, as well as a road and transit network, schools, community facilities and commercial precincts.



Structural Systems have completed Stage 1 of the works, as Alliance subcontractor for Bovis Lend Lease on this \$400 million project. Almost 1000 Tonnes of SSL slab system bonded post-tensioning was shop drawn, supplied, installed, stressed and grouted within seven months. Cast-in-situ, post-tensioned concrete was used exclusively for the suspended floors of this major project.

Due to the sheer size of the project, Bovis Lend Lease engaged two formwork subcontractors, two reinforcement fixing subcontractors, and two concrete suppliers. The entire post-tensioning scope was entrusted to Structural Systems under the Strategic Procurement Alliance between our companies. Structural Systems' financial strength and supplier relationships was key to this fast track project surpassing its program goals.

The Structural Systems crew, working with Bovis Lend Lease IIF (Incident and Injury Free) program, instituted safety improvements such as full time eye protection and double eye protection when using angle grinders.

The Rouse Hill Town Centre (RHTC) will evolve over a number of stages. Stage 1 includes approximately 65,000m² of retail space, 4,000m² of commercial space, 2000m² of learning, 5,000m² of health, 2,650m² of library and community centre, 100 plus residential apartments, in excess of 3,000 car parks and a public realm linking all the sections together.

Stage 1 alone includes:

- 65,000 m³ of concrete,
- 5,300 Tonnes of reinforcement,
- 270,000 m³ of earthmoving,
- 1700 reinforced cast-in-situ concrete piles.

Stage 2 will include a residential and commercial sleeve around the perimeter of the Town Centre to serve as a screen and add to the level of diversity and the mixed use fabric.



Project Data Sheet

Year:
2006

Location:
Rouse Hill, NSW

Client:
General Property Trust and SPV

Division:
Structural Systems (Northern) Pty Ltd

Scope:
Shop Drawing, Supply, Installation, Stressing and Grouting of Slab Post-Tensioning

Ph: 1300 SSL GRP (1300 775 477)
Web: www.structuralsystems.com.au

SSL-PDS-PT005